

Pipes & fittings

FEP / PFA lined pipes and fittings are best suitable for highly corrosive chemicals and petrochemical, pharmaceutical and food processing industry where no metal tubes last longer or plastic pipes are unusable because of higher service temperature and mechanical stress.

Lined pipes and fittings meets extreme mechanical requirement and gives excellent performance upto 265° C (509° F).

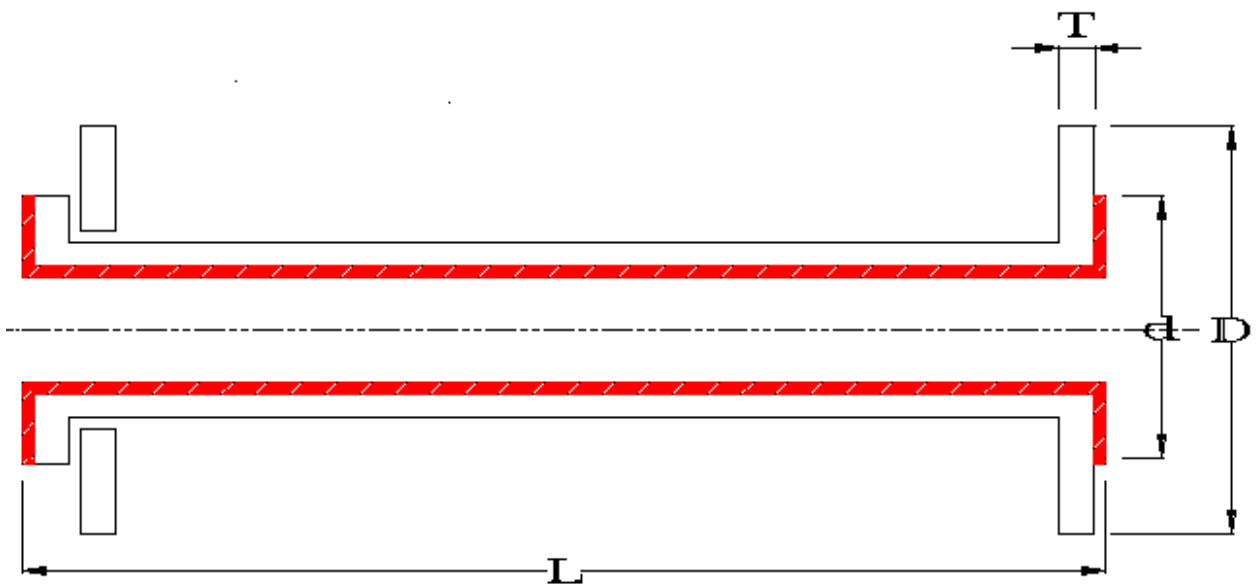
We can supply wide range of pipes and fittings:

- ⊕ [Pipe](#) upto 3 mtr. (10 feet) length
- ⊕ [Flanged Concentric reducer](#), nominal bore 40X25 mm (11/2" X 1") to 300 X 250 mm (12" X 10")
- ⊕ [Flanged eccentric reducer](#), nominal bore 40X25 mm (11/2" X 1") to 300 X 250 mm (12" X 10")
- ⊕ [Equal TEE](#), nominal bore 25 mm (1") to 300 mm (12")
- ⊕ [Reducing \(Unequal\) TEE](#), nominal bore 40X25 mm (11/2" X 1") to 200 X 100 mm (8" X 4")
- ⊕ [Cross \(Four way, equal\)](#), nominal bore 25 mm (1") to 300 mm (12")
- ⊕ [90° Elbow](#), nominal bore 25 mm (1") to 300 mm (12")
- ⊕ [45° Elbow](#), nominal bore 25 mm (1") to 300 mm (12")

Lined pipes

TEFLON PFA/FEP Lined Pipes

- ⊕ PFA/FEP lined pipes are resistant to most chemicals.
- ⊕ Available in wide range of size to meet needs of chemical, petrochemical, pharmaceutical and food processing industry.
- ⊕ Available in 25 mm (1") NB to 300 mm (12") NB and length from 100 mm (4") to 3000 mm (120")
- ⊕ Pipe material option in C.S. or S.S. as per ASTM A-106 Gr. B
- ⊕ Pipe rating option as per Schedule 40 or 20 (Seamless Pipe)



Dimension Chart

Nominal Bore		Lining Thickness (mm)	D (mm)	d (mm)	T (mm)	L (mm)	
Inches	MM					Min.	Max.
1	25	3	108	51	14.5	100	3000
1 ½	40	3	127	73	17.5	100	3000
2	50	3	152	92	19.5	100	3000
3	80	3	191	127	24	100	3000
4	100	4	229	157	24	100	3000
6	150	5	279	216	25.5	100	2000
8	200	6-6.5	343	270	29	100	2000
10	250	7-7.5	406	324	30.5	100	1000
12	300	7.5-8	483	381	32	100	500

- ⊕ Pipe body from C.S. or S.S. as per ASTM A-106 Gr. B (Customer specified)
- ⊕ Pipe rating will be Schedule 40 or 20 (Seamless Pipe)(Customer specified)
- ⊕ Pipe's all flanges will be 150#
- ⊕ Pipe's all flanges drilled to be ANSI B 16.5 or customer specified.

LINING SPECIFICATION	
LINING MATERIAL	PFA / FEP
LINING THICKNESS	3 to 8 MM ALL WETTED PARTS
TEMP. WITHSTAND	FEP 205°C PFA 265°C
TEST PRESSURE	
PIPE	20 Kg / Cm²
SPARK TEST	15 KV DC

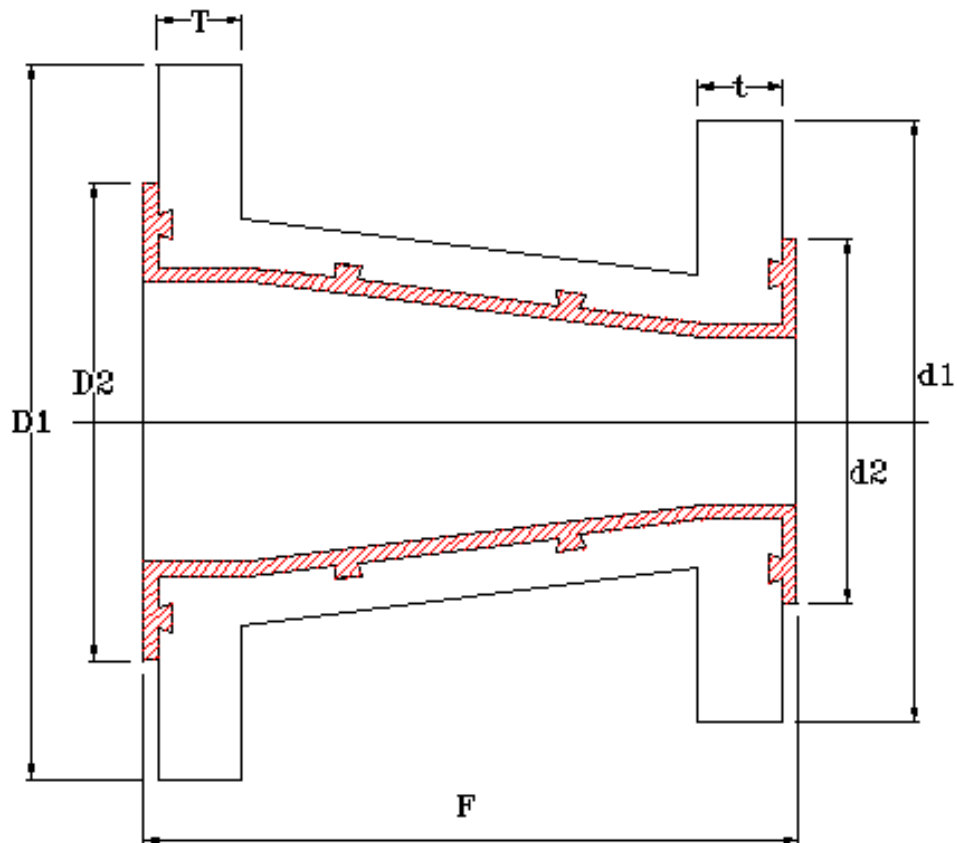
Reducers

Polycoat Flowchem manufacture PFA/FEP lined reducer in two main configuration, viz. Concentric reducer and eccentric reducer. Flanges are drilled to meet ANSI B 16.5.

Reducers are used to connect lines of two unequal sizes.

TEFLON LINED CONCENTRIC REDUCER

Concentric Reducer



Nominal Bore		Lining Thickness	F (mm)	D1 (mm)	d1 (mm)	D2 (mm)	d2 (mm)	T (mm)	t (mm)
Inches	MM								
1 ½	40 x	3	114	127	108	73	51	17.5	14.5
x 1	25								

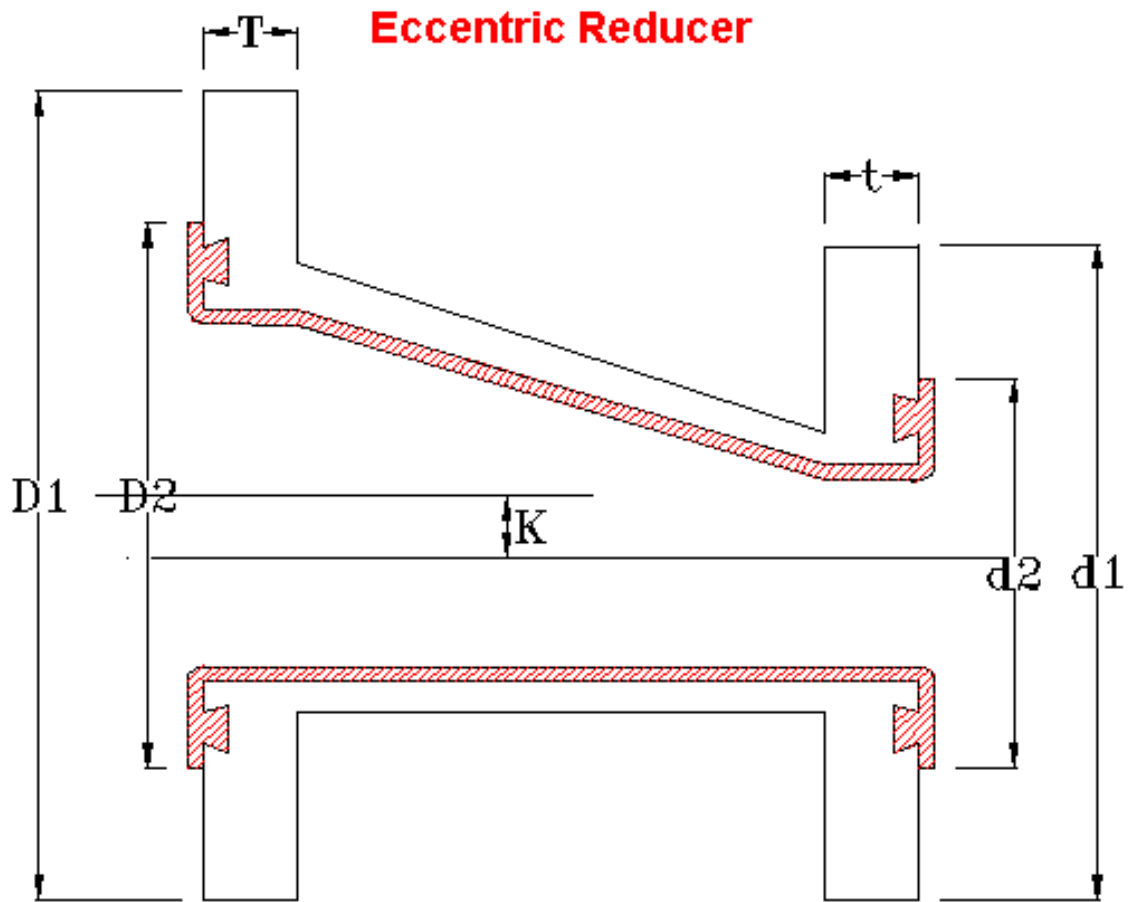
2 x 1	50 x 25	3	127	152	108	92	51	19.5	14.5
2 x 1 ½	50 x 40	3	127	152	127	92	73	19.5	17.5
3 x 1	80 x 25	3	152	191	108	127	51	24	14.5
3 x 1 ½	80 x 40	3	152	191	127	127	73	24	17.5
3 x 2	80 x 50	4	152	191	152	127	92	24	19.5
4 x 2	100 x 50	4	178	229	152	157	92	24	19.5
4 x 3	100 x 80	4	178	229	191	157	127	24	24
6 x 3	150 x 80	5	229	279	191	216	127	25.5	24
6 x 4	150 x 100	5	229	279	229	216	157	25.5	24
8 x 4	200 x 100	6	279	343	229	270	157	29	24
8 x 6	200 x 150	6.5	279	343	279	270	216	29	25.5
10 x 6	250 x 150	7-7.5	305	406	279	324	216	30.5	25.5
10 x 8	250 x 200	7-7.5	305	406	343	324	270	30.5	29
12 x 8	300 x 200	7.5-8	356	483	343	381	270	32	29
12 x 10	300 x 250	7.5-8	356	483	406	381	324	32	30.5

Standard Concentric Reducer confirm to the following

- ⊕ Concentric Reducer's body will be C.I., W.C.B or S.S. 150#.
- ⊕ Concentric Reducer's all flanges will be 150#
- ⊕ Concentric Reducer's all flanges drilled to be ANSI B 16.5

LINING SPECIFICATION	
LINING MATERIAL	TEFLON / FEP
LINING THICKNESS	3to8 MM ALL WETTED PARTS
TEMP. WITHSTAND	205°C TEMP. MAX.
TEST PRESSURE	20 Kg / Cm ²
SPARK TEST	15 KVDC

PFA /FEP LINED ECCENTRIC REDUCER



Nominal Bore		Lining Thickness	F (mm)	K (mm)	D1 (mm)	d1 (mm)	D2 (mm)	d2 (mm)	T (mm)	t (mm)
Inches	mm									
1 ½	40 x 25	3	114	7	127	108	73	51	17.5	14.5
2 x 1	50 x 25	3	127	13	152	108	92	51	19.5	14.5
2 x 1 ½	50 x 40	3	127	7	152	127	92	73	19.5	17.5
3 x 1	80 x 25	3	152	20	191	108	127	51	24	14.5
3 x 1 ½	80 x 40	3	152	20	191	127	127	73	24	17.5
3 x 2	80 x 50	4	152	15	191	152	127	92	24	19.5
4 x 2	100 x 50	4	178	25	229	152	157	92	24	19.5

4 x 3	100 x 80	4	178	10	229	191	157	127	24	24
6 x 3	150 x 80	5	229	40	279	191	216	127	25.5	24
6 x 4	150 x 100	5	229	25	279	229	216	157	25.5	24
8 x 4	200 x 100	6	279	50	343	229	270	157	29	24
8 x 6	200 x 150	6.5	279	25	343	279	270	216	29	25.5
10 x 6	250 x 150	7-7.5	305	50	406	279	324	216	30.5	25.5
10 x 8	250 x 200	7-7.5	305	25	406	343	324	270	30.5	29
12 x 8	300 x 200	7.5-8	356	50	483	343	381	270	32	29
12 x 10	300 x 250	7.5-8	356	25	483	406	381	324	32	30.5

Standard Eccentric Reducer confirm to the following

- ⊕ Eccentric Reducer's body will be C.I., W.C.B or S.S. 150#.
- ⊕ Eccentric Reducer's all flanges will be 150#
- ⊕ Eccentric Reducer's all flanges drilled as per ANSI B 16.5

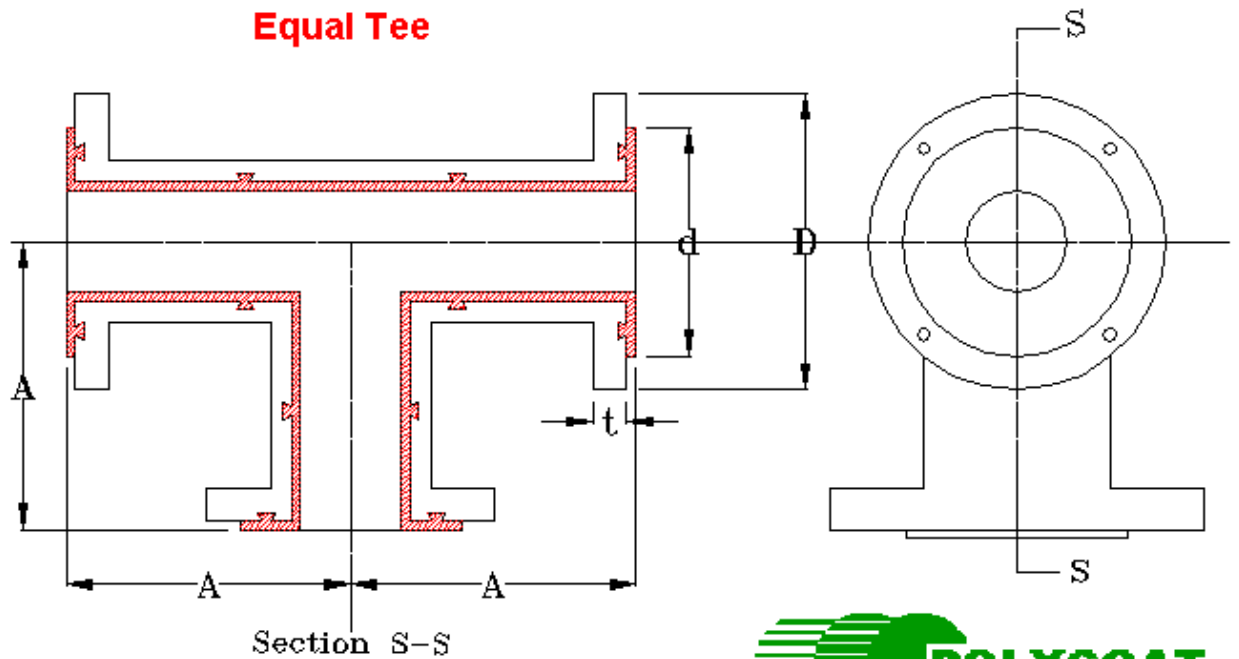
LINING SPECIFICATION	
LINING MATERIAL	TEFLON / FEP
LINING THICKNESS	3to8 MM ALL WETTED PARTS
TEMP. WITHSTAND	205°C TEMP. MAX.
TEST PRESSURE	20 Kg / Cm ²
SPARK TEST	15 KVDC



PFA / FEP LINED TEE ("T"Connection)

- ⊕ Lined Tee connections are available in two configuration, equal and unequal.
- ⊕ Lining of PFA or FEP as per customer specifications.
- ⊕ Lining thickness of 3mm.

TEFLON Lined Equal TEE



Dimension Chart

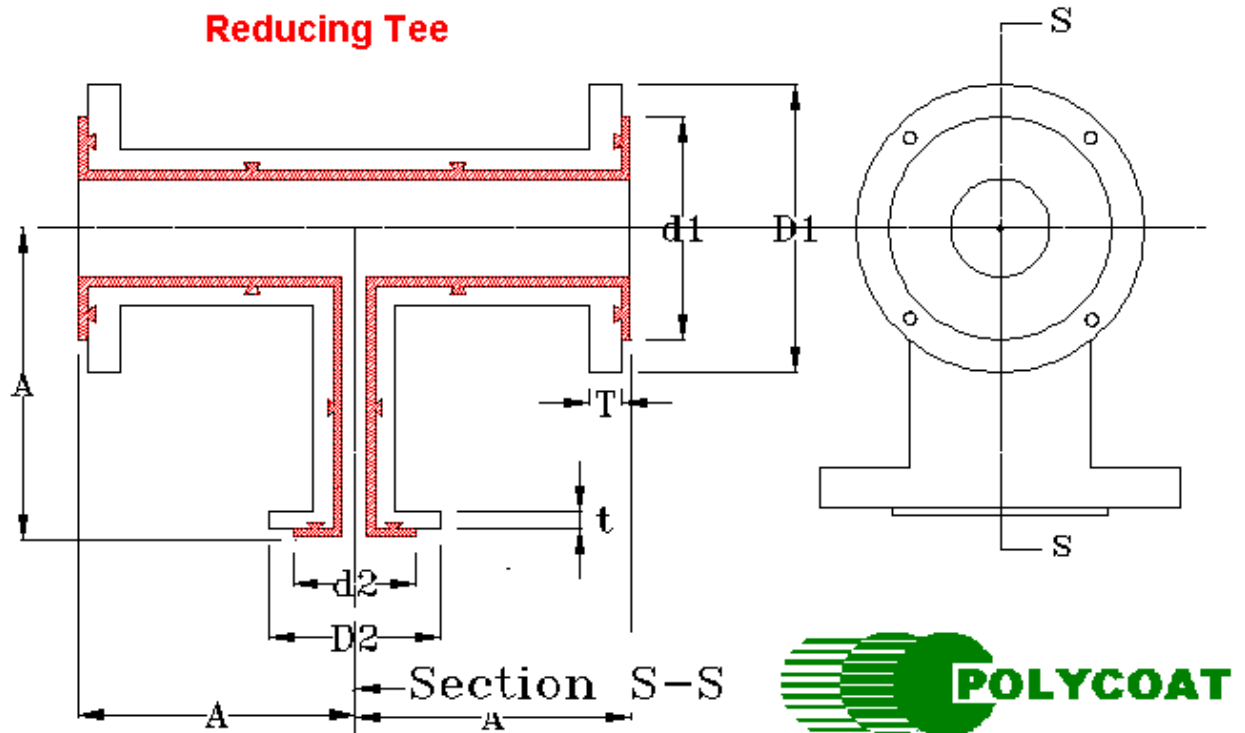
Nominal Bore		Lining Thickness	A	D	d	t
Inches	MM					
1	25	3	89	108	51	14.5
1 ½	40	3	102	127	73	17.5
2	50	3	114	152	92	19.5
3	80	3	140	191	127	24
4	100	4	165	229	157	24
6	150	5	203	279	216	25.5
8	200	6.5	229	343	270	29
10	250	7.5	279	406	324	30.5
12	300	8.5	305	483	381	32

Standard Tee confirm to the following

- ⊕ "Tee" body will be S.S. , W.C.B. or C.I. Class 150#
- ⊕ "Tee" rating will be Schedule 40 (Seamless Pipe)
- ⊕ Tee's all flanges will be 150#
- ⊕ Tee's all flanges drilled to be ANSI B 16.5

LINING SPECIFICATION	
LINING MATERIAL	PFA / FEP
LINING THICKNESS	3 MM ALL WETTED PARTS
TEMP. WITHSTAND	FEP 205°C MAX PFA 205°C MAX
TEST PRESSURE	20 Kg / Cm ²
SPARK TEST	15 KVDC

TEFLON Lined Reducing (Unequal) TEE



Dimension Chart

Nominal Bore		Lining Thickness	A	D1	d1	D2	d2	T	t
Inches	mm								
1 ½ x 1	40 x 25	3	102	127	73	108	51	17.5	14.5
2 x 1	50 x 25	3	114	152	92	108	51	19.5	14.5
2 x 1 ½	50 x 40	3	114	152	92	127	73	19.5	17.5
3 x 1	80 x 25	3	140	191	127	108	51	24	14.5
3 x 1 ½	80 x 40	3	140	191	127	127	73	24	17.5

4 x 1	100 x 25	4	165	229	157	108	51	24	14.5
4 x 1 ½	100 x 40	4	165	229	157	127	73	24	17.5
4 x 2	100 x 50	4	165	229	157	152	92	24	19.5
4 x 3	100 x 80	4	165	229	157	191	127	24	24
6 x 1	150 x 25	5	203	279	216	108	51	25.5	14.5
6 x 1 ½	150 x 40	5	203	279	216	127	73	25.5	17.5
6 x 2	150 x 50	5	203	279	216	152	92	25.5	19.5
6 x 3	150 x 80	5	203	279	216	191	127	25.5	24
6 x 4	150 x 100	5	203	279	216	229	157	25.5	24
8 x 2	200 x 50	6.5	229	343	270	152	92	29	19.5
8 x 3	200 x 80	6.5	229	343	270	191	127	29	24
8 x 4	200 x 100	6.5	229	343	270	229	157	29	24

Standard Reducing Tee confirm to the following

- ⊕ "Reducing Tee" body will be S.S. , W.C.B. or C.I. Class 150#
- ⊕ "Reducing Tee " rating will be Schedule 40 (Seamless Pipe)
- ⊕ Reducing Tee's all flanges will be 150#
- ⊕ Reducing Tee's all flanges drilled to be ANSI B 16.5

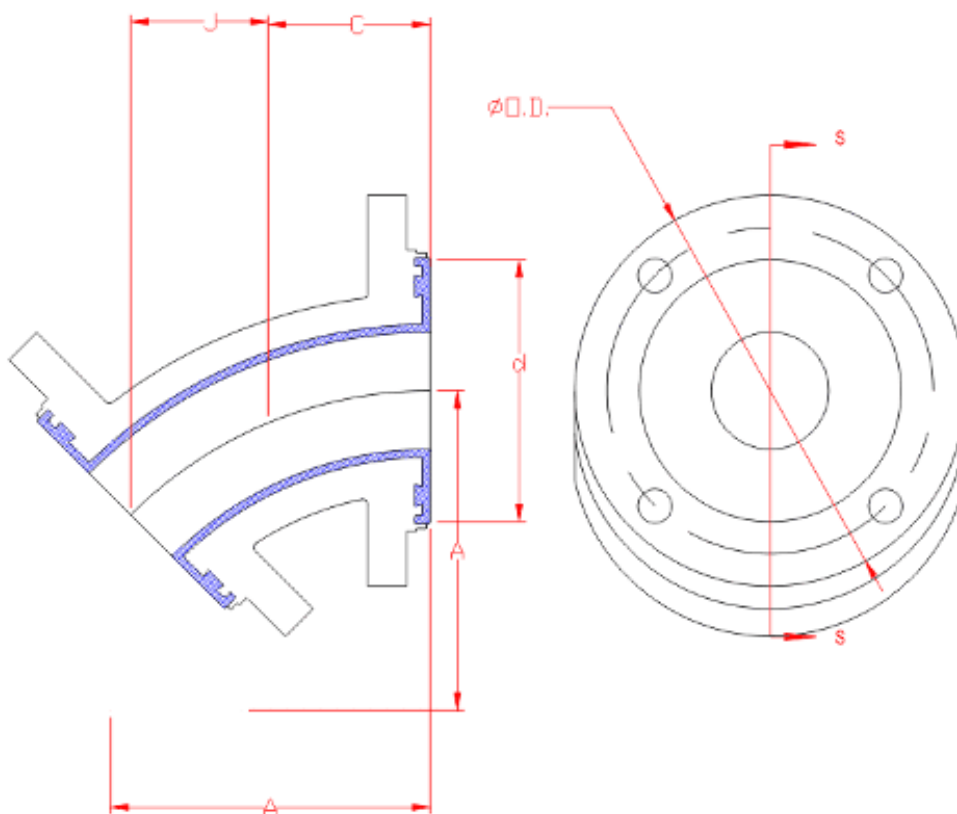
LINING SPECIFICATION	
LINING MATERIAL	PFA / FEP
LINING THICKNESS	3 MM ALL WETTED PARTS
TEMP. WITHSTAND	FEP 205°C MAX PFA 205°C MAX
TEST PRESSURE	20 Kg / Cm²
SPARK TEST	15 KVDC



45° Elbow

- ⊕ PFA/FEP elbows are resistant to most chemicals.
- ⊕ Available in wide range of size to meet needs of chemical, petrochemical, pharmaceutical and food processing industry.
- ⊕ Available in 25 mm (1") NB to 300 mm (12") NB and length from 100 mm (4") to 3000 mm (120")

Dimension Chart



Nominal Bore		Lining Thickness	C (mm)	J (mm)	OD (mm)	d (mm)	t (mm)
Inches	MM						
1	25	3	44	32	108	51	14.5
1 1/2	40	3	57	41	127	73	17.5
2	50	3	64	44	162	92	19.5
3	80	3	76	54	191	127	24
4	100	3	102	71	229	157	24
5	150	5	127	90	279	216	25.5

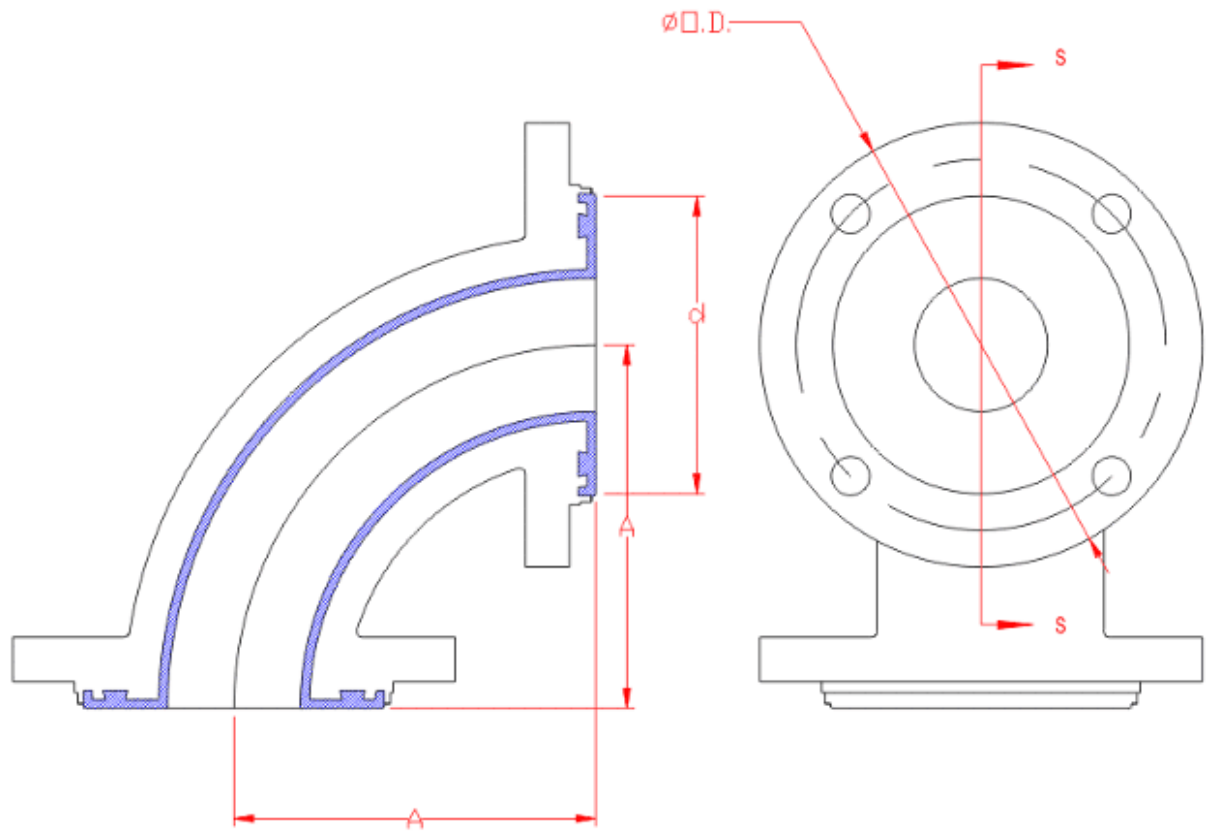
6	200	6.5	140	98	343	270	29
10	250	7.5	165	114	406	324	30.5
12	300	8.5	190	135	453	381	32

90° Elbow

- ⊕ PFA/FEP elbows are resistant to most chemicals.
- ⊕ Available in wide range of size to meet needs of chemical, petrochemical, pharmaceutical and food processing industry.
- ⊕ Available in 25 mm (1") NB to 300 mm (12") NB and length from 100 mm (4") to 3000 mm (120")

Dimension Chart

Nominal Bore		Lining Thickness	A (mm)	OD (mm)	d (mm)	t (mm)
Inches	MM					
1	25	3	89	108	51	14.5
1 1/2	40	3	102	127	73	17.5
2	50	3	114	152	92	19.5
3	80	3	140	191	127	24
4	100	4	165	229	157	24
5	150	5	203	279	216	25.5
6	200	6.5	229	343	270	29
10	250	7.5	279	406	324	30.5
12	300	8.5	305	483	381	32



Contact Information

Polycoat Flowchem

Telephone : 91-79-274 6754

FAX : 91-79-274 5754

9, Minanagar, Vastral Road, Amraiwadi, Ahmedabad-380 026, India

E mail polycoat@vsnl.com

* Teflon, Tefzel are registered trade mark of Dupont, USA